

www.lumaco.eu



Assembly and Automation Company. WORLDWIDE.



- Assembly technology provider
- Electric installation integrator
- Programming and automation
- Innovation and machine design

• Electric installation

Installation and repair of heavy-current and light-current industrial equipment

Electro installations of robotic and automated workstations and facilities

Installation of new wiring up to 1,000V and above 1,000V

Electrical distribution repairs and reconstructions

Installation of the light and heavy current wiring
and of the measuring and control equipment

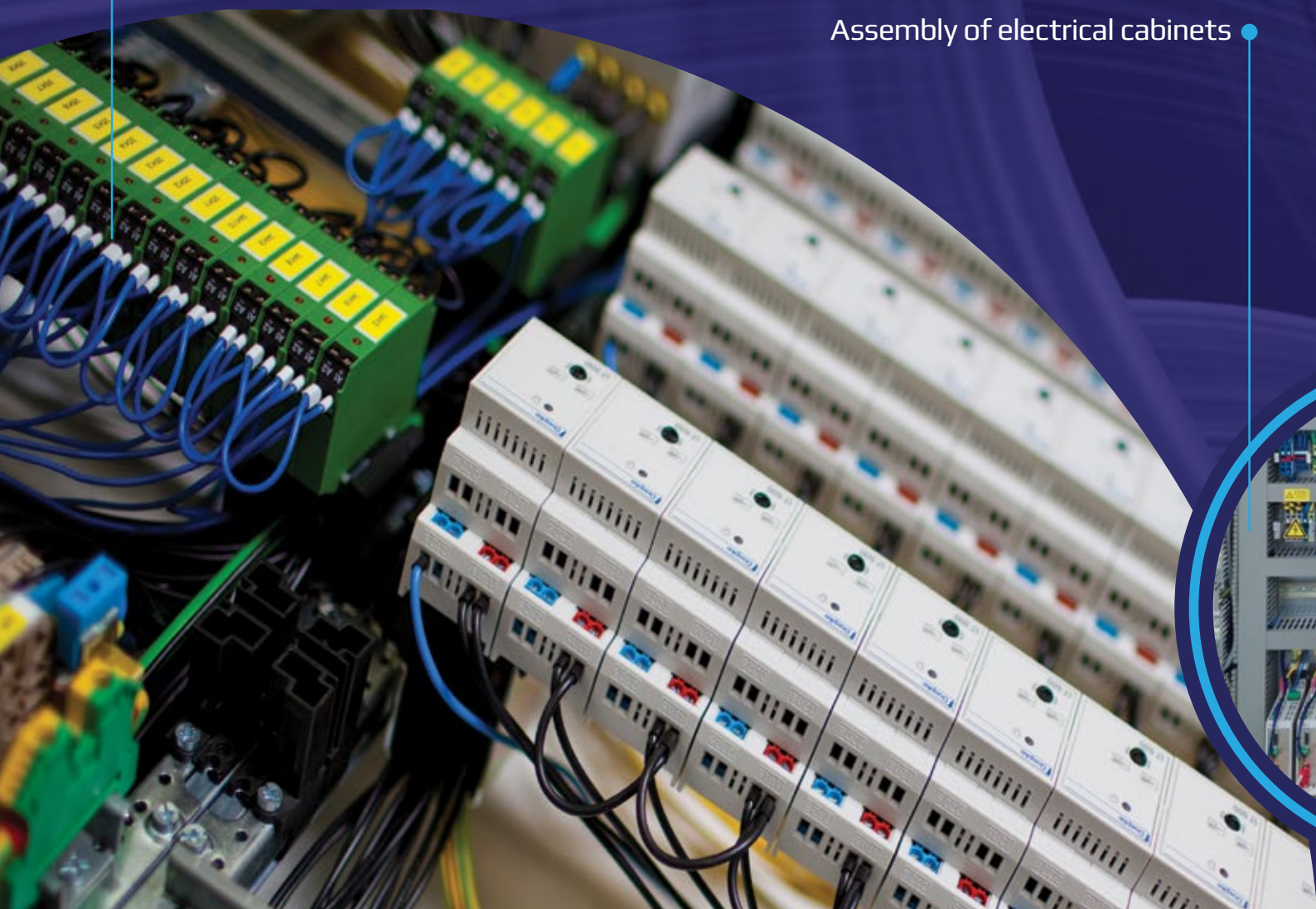
Wide range of works under an agreement with a customer
supplied with the project documentation

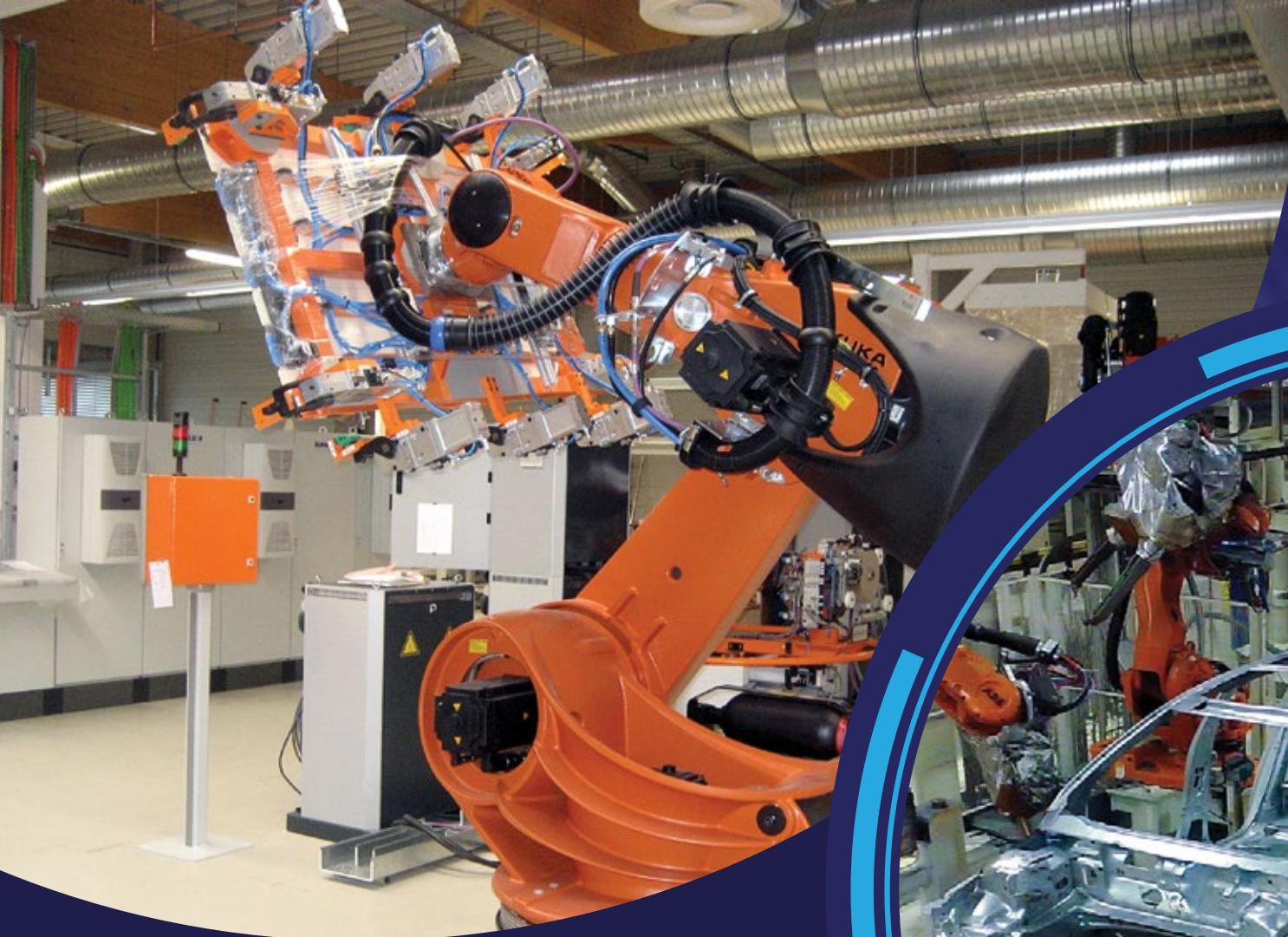
Assembly of electrical cabinets

Assembly works

Assembly of automated production lines,
working platforms and robots

- Welding activity: All welders are holders of welding certificates with Official examinations according to STN EN ISO 9606-1 /111, 135, 136, 141...
- Moving of steel structures, working platforms and production lines





Industrial automation and fixtures assembly

Programming of robots, robotic stations and automated lines

Turn-key solutions in the field of robotization, handling, palletization and automation of processes

Fixtures assembly such as laser stations, grippers, rotary tables, assembly and welding fixtures...



Our company holds certificates **ISO 9001:2008**,
ISO 14001:2005, **SCC** Version 2011**.
Our employees have **SCC** certificates issued
by **TÜV SÜD Slovakia**



• Projection and design work

Development and design of machine parts and assemblies for the automotive industry, traffic engineering and general engineering (CAD systems)

Design of 2D or 3D solutions

Processing of data into the digital form

Design activities in CATIA V5 R24 and Autodesk Inventor i10

Mechanical conveyors:

- driven by roller, belt, chain
- modular driven
- unpowered (roller)

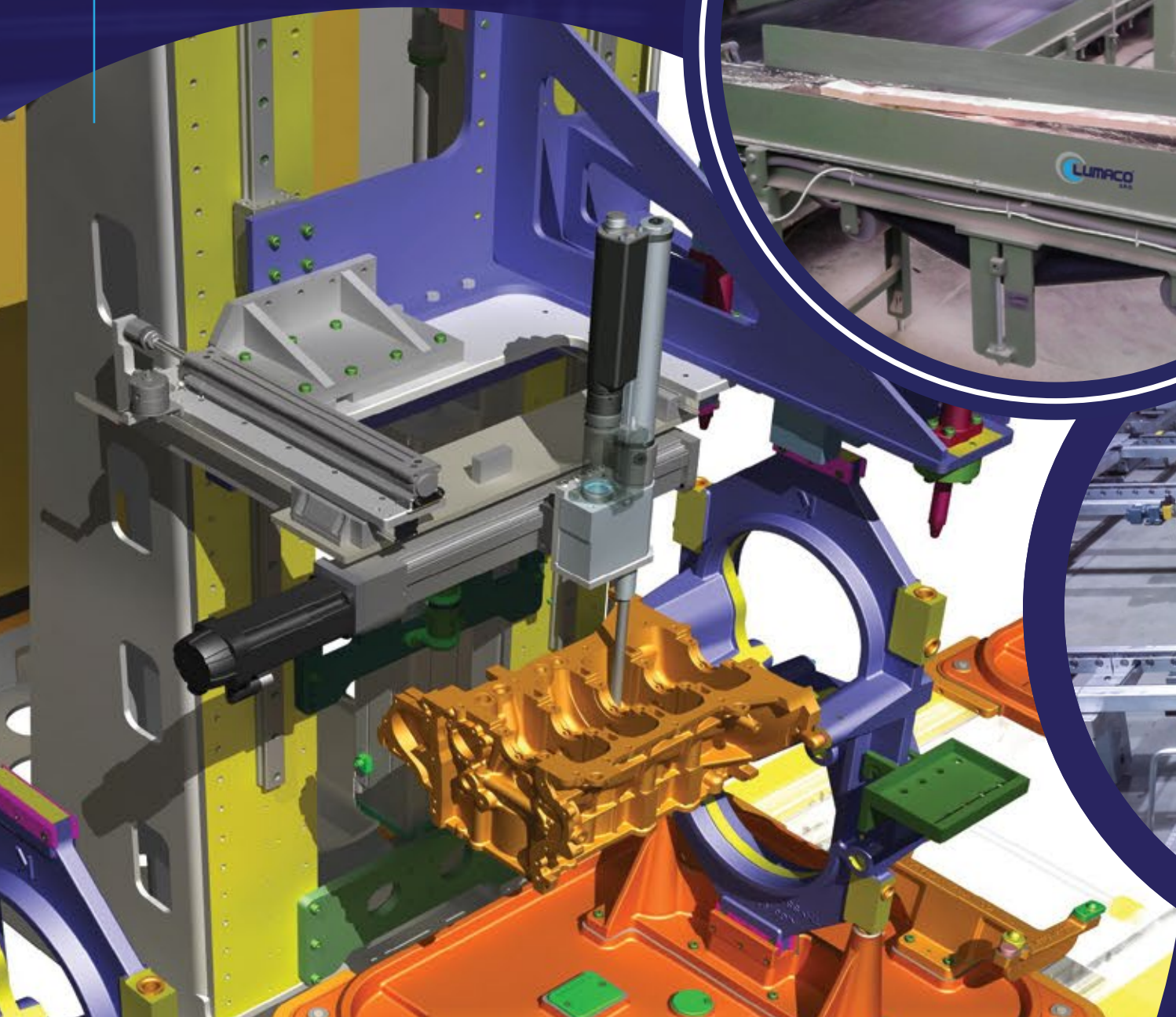
Conveyors using kinetic energy
(roller - storage)

Hydraulic conveyors
(conveyors on platform)



• 3D measurement, scanning

3D Measurement and scanning using most advanced technologies





Engineering production

Our mechanical engineering production is focused on production of industrial goods according to customer's CAD technical documentation. We are focused mainly on the automotive industry.

Our company LUMACO GROUP is now focused on production capacity expansion and technological innovations.

We are providing

- Gripper assembly (welding, manipulation and combined)
- Welding fixtures assembly
- Welding gun assembly
- Assembly of various manipulation tools and fixtures for automotive industry (LCA trolleys, gravity buffers, conveyors etc.)
- Assembly of electrical cabinets

On the basis of the requirements we are able to carry out:

- Mechanical assembly
- Pneumatical assembly
- Electrical assembly
- Final measurements by:
 - ATOS TRIPLE SCAN optical scanner
 - SMS measuring by FARO LASER TRACKER
 - SMS measuring by FARO ARM PRIME 8
- Engraving



Qualification for a new technology

Our employees are fully qualified, skilled and continuously trained for working with the latest technology. Production and assembly workplaces are equipped with technically skilled personnel that carries out the assembly at modern workplaces (particularly in a 3D environment with the drawings shown on computers, thereby we also contribute to achieve the environmental objectives).





References

KUKA



and many others ...

Contacts



Potočná 2742, 022 01 Čadca
Slovak Republic
email: lumaco@lumaco.eu
web: www.lumaco.eu



LUMACO SK s.r.o.
Potočná 2742
022 01 Čadca
Slovak Republic



LUMACO GERMANY GmbH
Ludwig Ganghofer-Straße 24
820 31 Grünwald
Germany



LUMACO SWISS GmbH
Sihleggstrasse 23
8832 Wollerau
Switzerland



LUMACO CZECH s.r.o.
Husinecká 930/10
130 00 Praha 3
Czech Republic



LUMACO U.S., LLC
6201 Fairview Road,
Suite 330, Charlotte,
NC 28210 | USA

our companies